

SHAPE YOUR FUTURE IN AUTOMOTIVE INDUSTRY

Post Graduate Diploma in
Automotive Clay &
Digital Sculpting

Automotive Sculpting Programme
in collaboration with SIAM
(Society of Indian Automobile Manufacturers)



MIT INSTITUTE
OF DESIGN



MIT-ADT
UNIVERSITY
PUNE, INDIA
A leap towards World Class Education





WHO WE ARE ?

MAEER'S MIT Institute of design established in 2006 is an initiative started under the guidance of today's leading minds of Design education in India. In a short span of 17 years, the institute has developed its identity as one of the best research and training institutions offering the highest quality of design education

ABOUT SIAM

Society of Indian Automobile Manufacturers (SIAM) is the apex Industry body representing leading vehicle & vehicular engine manufacturers in India. Through its Styling & Design Group, SIAM is committed to strengthen the Indian automotive-design ecosystem. A part of this effort is undertaken through the proper training and mentoring of students as well as practicing designers, digital & physical modellers. Automotive Clay Modelling was identified collectively by Indian OEMs as an area with a gap between the supply & demand of skilled personnel

ABOUT PROGRAMMES

The importance of clay models in helping to visualize & sell concepts that cannot be overstated and though the related skill sets are much in demand, their availability well below what is needed by the industry be it transportation or product. With the aim to address this gap, SIAM will be supporting MITID, Pune for an Automotive Clay & Digital Sculpting programme.

PROGRAMMES OFFERED

Post Graduate Diploma Programme (2 Years)

Automotive Clay & Digital Sculpting

This programme will be intensive skill based, which has inputs in design fundamentals, form studies, technical design, digital & physical modelling, materials and prototyping.

Eligibility

Bachelor's Degree in any discipline

ADMISSION PROCESS

MIT ID skill test, portfolio & interview.





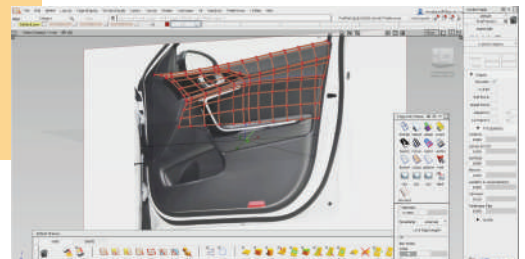
AUTOMOTIVE CLAY SCULPTING

Automotive Clay Sculpting help translate a designer's vision into a tangible reality. Clay modelling is still commonly used by OEMs in automotive and product design industry. This is a way to pre-visualize concepts which help in decision making before taking the products further for manufacturing.



AUTOMOTIVE DIGITAL SCULPTING

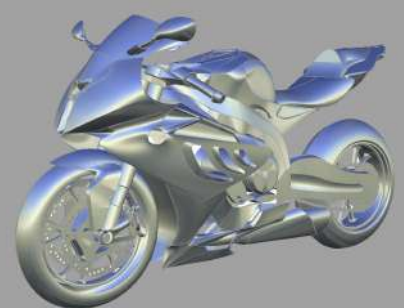
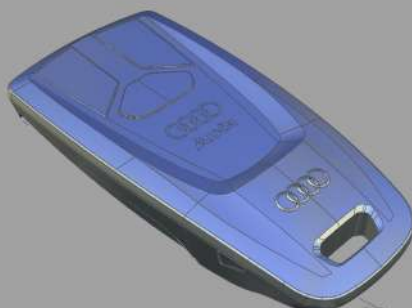
Automotive Digital Sculptor prepares mathematical data or 3D model using concept anticipated by a designer. This data is needed for various downstream activities of a vehicle design & development programme. This requires ability to understand the creative design process, work with fine details, trade-off between design & engineering and work at a high level of skills in Autodesk Alias & allied softwares. The digital sculpting is an essential part of the creative design process and the common chord between Designers and Engineers.



INDUSTRY CONNECTS & PLACEMENTS



DAIMLER TRUCK





**MIT INSTITUTE
OF DESIGN**



**MIT-ADT
UNIVERSITY**
PUNE, INDIA
A leap towards World Class Education



+91 7030 289 408

www.mitid.edu.in | admissions2023@mitid.edu.in

Rajbaug, Pune-Solapur Highway, Loni Kalbhor, Pune-412201